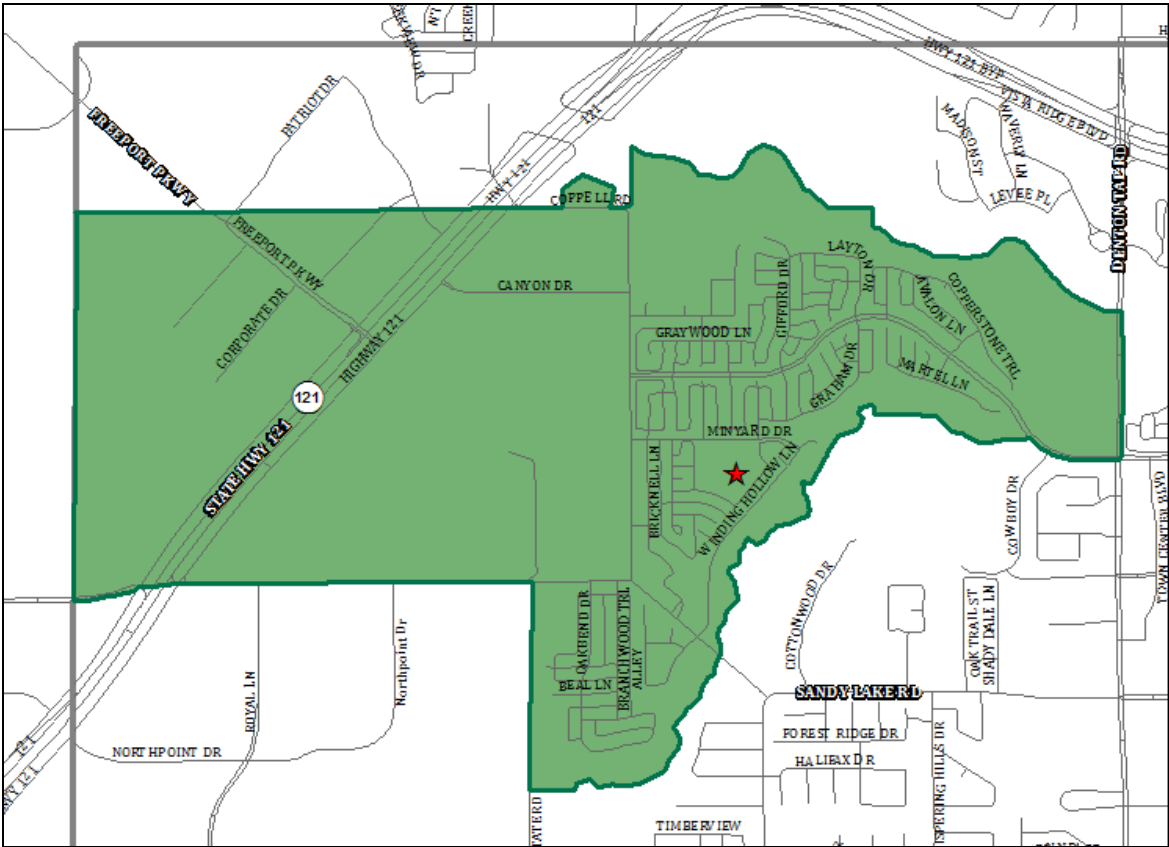


Templeton Demographics  
Presentation to  
Board of Trustees  
April 27, 2015

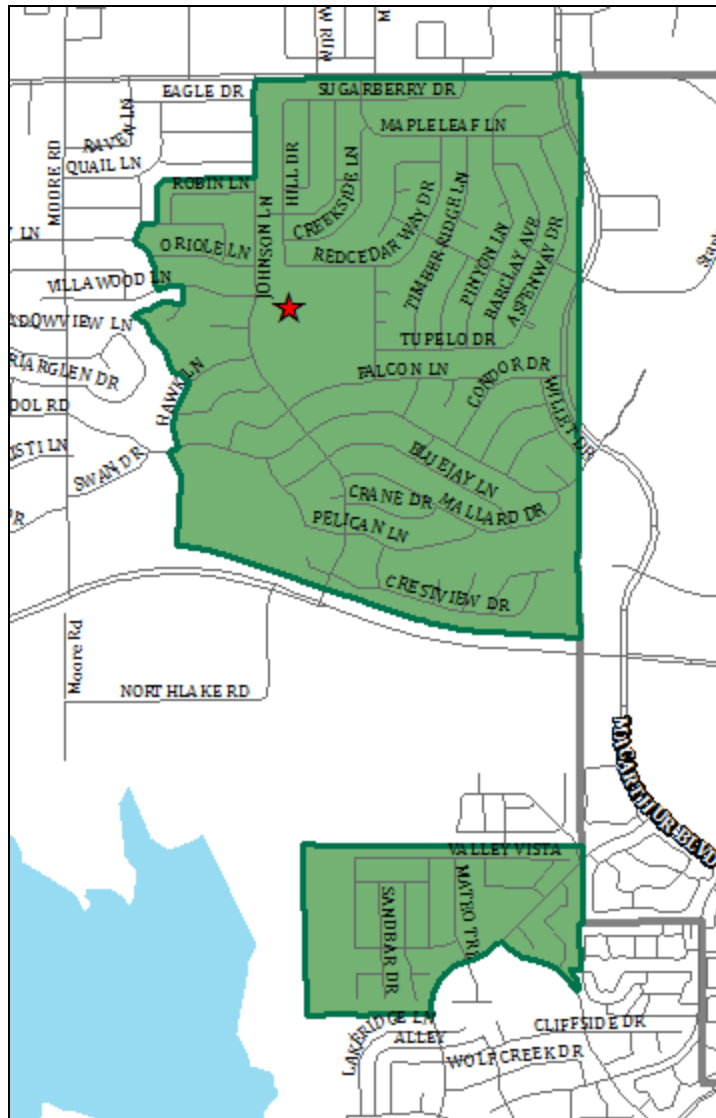
# COTTONWOOD CREEK ELEMENTARY

Campus Name	Capacity	2014/15	2015/16	2016/17	2017/18	2018/19	2019/20	2020/21	2021/22	2022/23	2023/24	2024/25
Cottonwood Creek Elementary	600	533	534	527	517	507	508	521	537	555	577	594



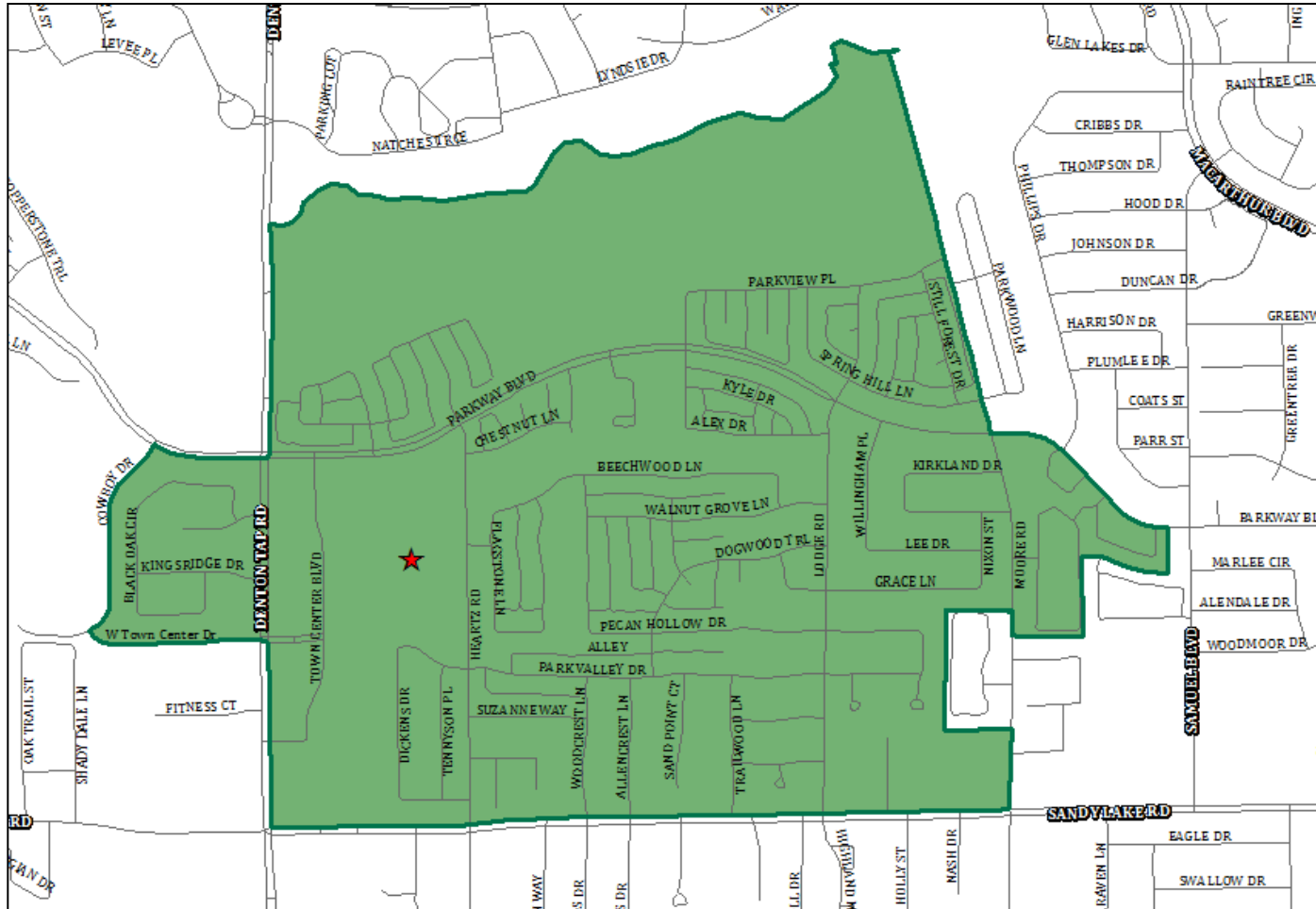
# MOCKINGBIRD ELEMENTARY

Campus Name	Capacity	2014/15	2015/16	2016/17	2017/18	2018/19	2019/20	2020/21	2021/22	2022/23	2023/24	2024/25
Mockingbird Elementary	600	556	533	527	508	510	517	531	549	557	559	563



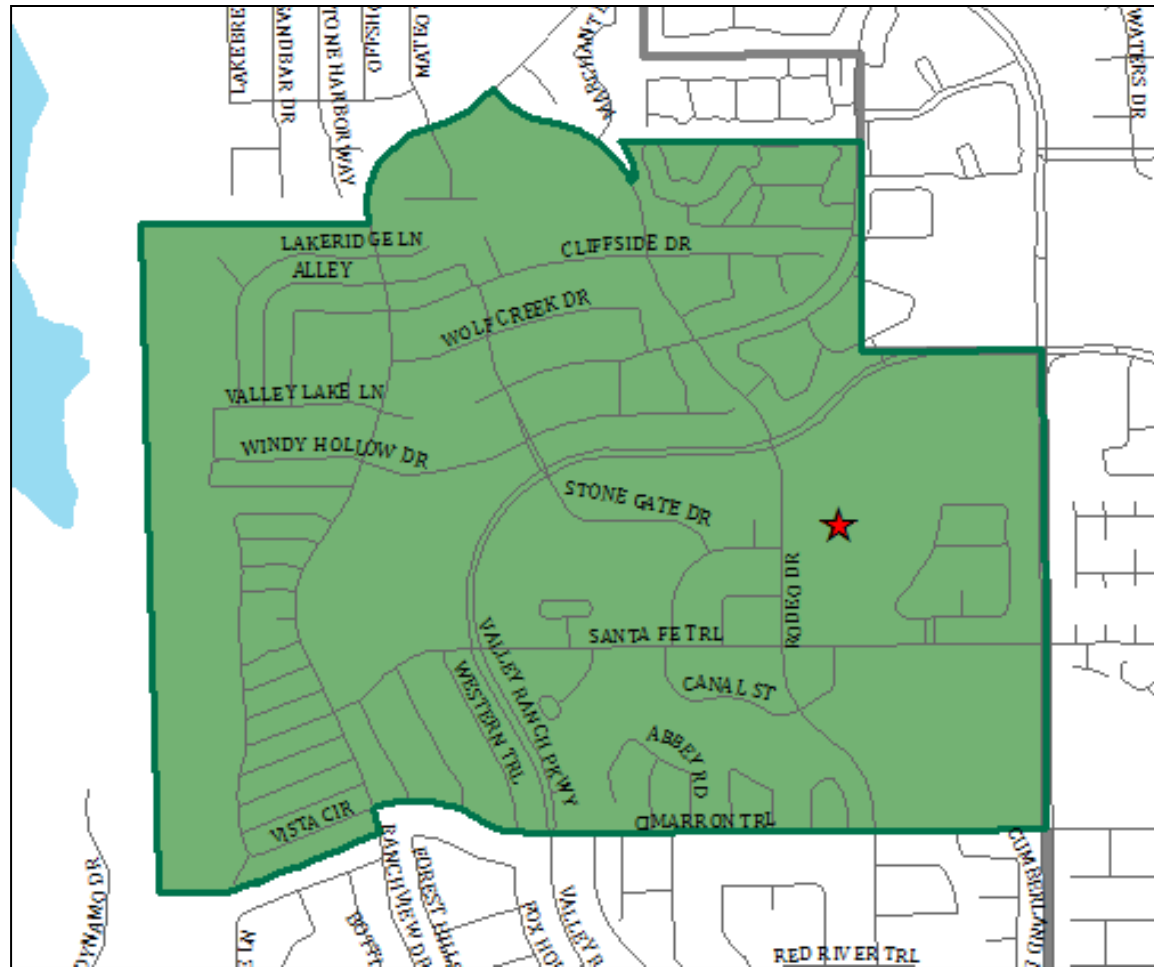
# TOWN CENTER ELEMENTARY

Campus Name	Capacity	2014/15	2015/16	2016/17	2017/18	2018/19	2019/20	2020/21	2021/22	2022/23	2023/24	2024/25
Town Center Elementary	600	514	491	490	488	465	462	466	498	505	529	627



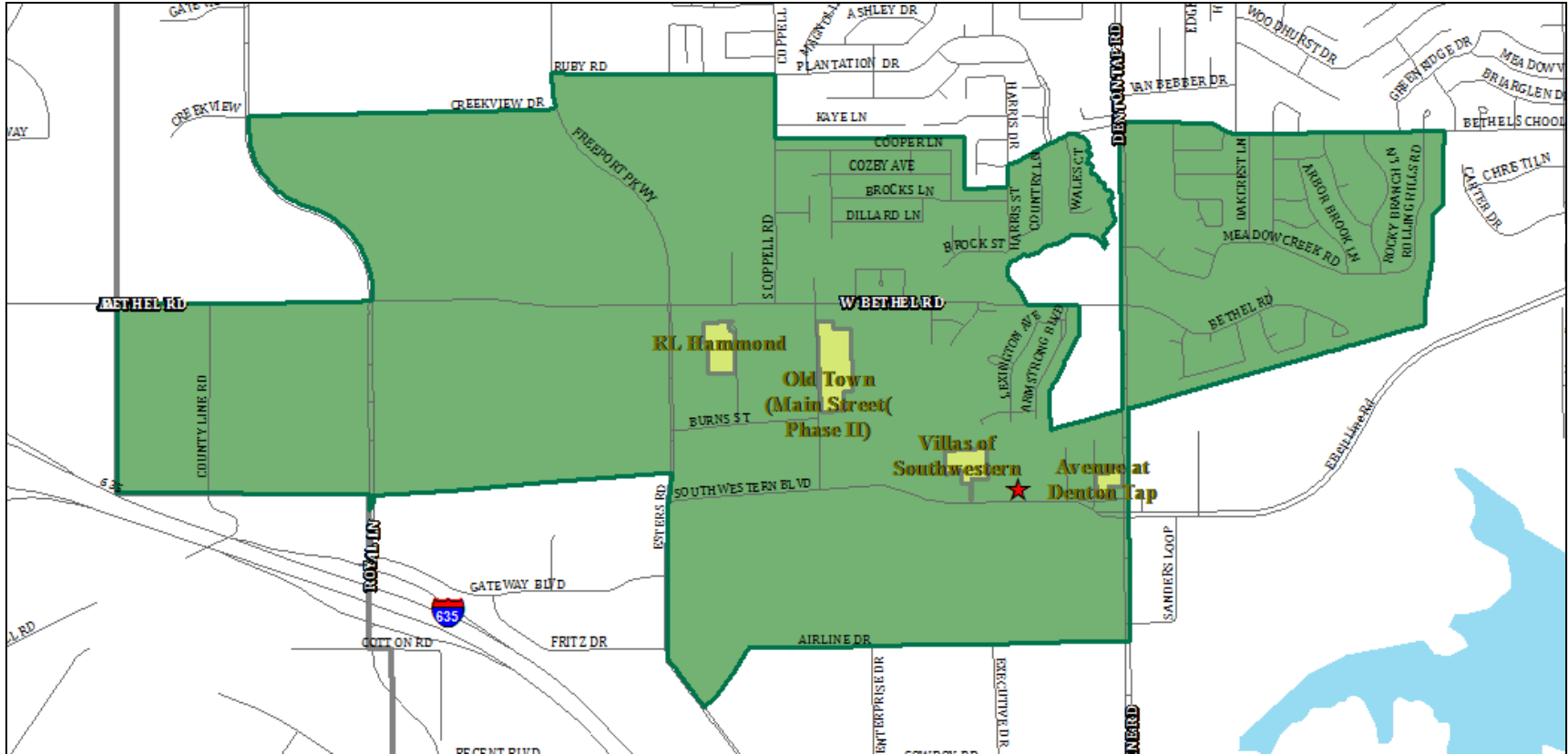
# VALLEY RANCH ELEMENTARY

Campus Name	Capacity	2014/15	2015/16	2016/17	2017/18	2018/19	2019/20	2020/21	2021/22	2022/23	2023/24	2024/25
Valley Ranch Elementary	600	637	647	647	648	637	626	634	645	645	659	665



# PINKERTON ELEMENTARY

Campus Name	Capacity	2014/15	2015/16	2016/17	2017/18	2018/19	2019/20	2020/21	2021/22	2022/23	2023/24	2024/25
Pinkerton Elementary	400	321	342	346	358	379	406	415	425	441	455	469



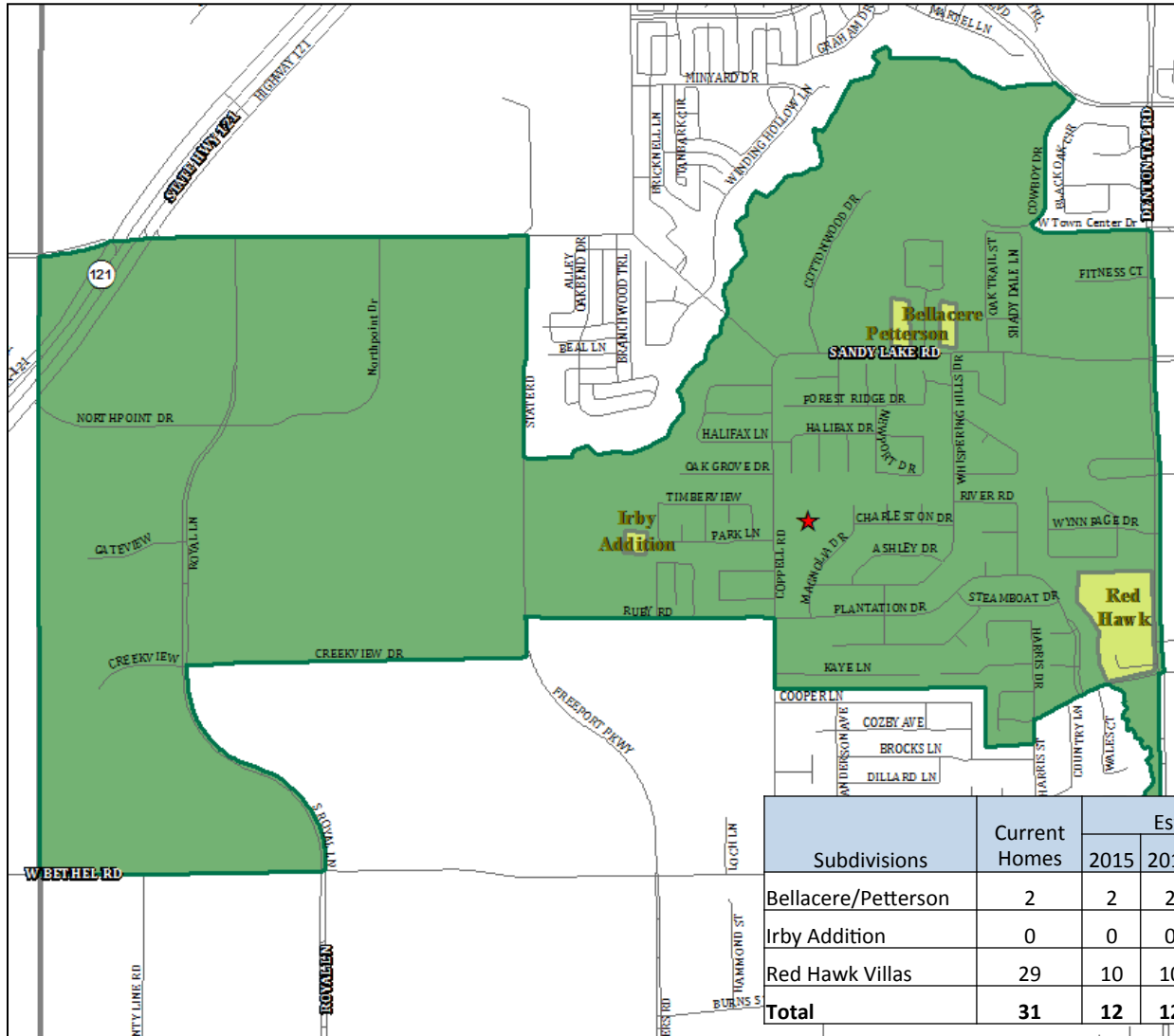
## Legend

- ★ Elementary Schools
- Active/Future Housing Developments
- Elementary Boundary
- ISD Boundary

Subdivisions	Current Homes	Est. New Homes					Total homes in 5 yrs	Total homes in 10 yrs
		2015	2016	2017	2018	2019		
Hammond Townhomes	0	0	0	9	9	0	18	18
Old Town Main Street	1	12	12	12	0	0	37	37
Villas of Southwestern	1	0	0	0	0	0	1	7
Avenue at Denton Tap	0	0	0	0	0	0	0	29
<b>Total</b>	<b>2</b>	<b>12</b>	<b>12</b>	<b>21</b>	<b>9</b>	<b>0</b>	<b>56</b>	<b>91</b>

# WILSON ELEMENTARY

Campus Name	Capacity	2014/15	2015/16	2016/17	2017/18	2018/19	2019/20	2020/21	2021/22	2022/23	2023/24	2024/25
Wilson Elementary	600	550	559	563	567	594	591	602	628	630	625	627



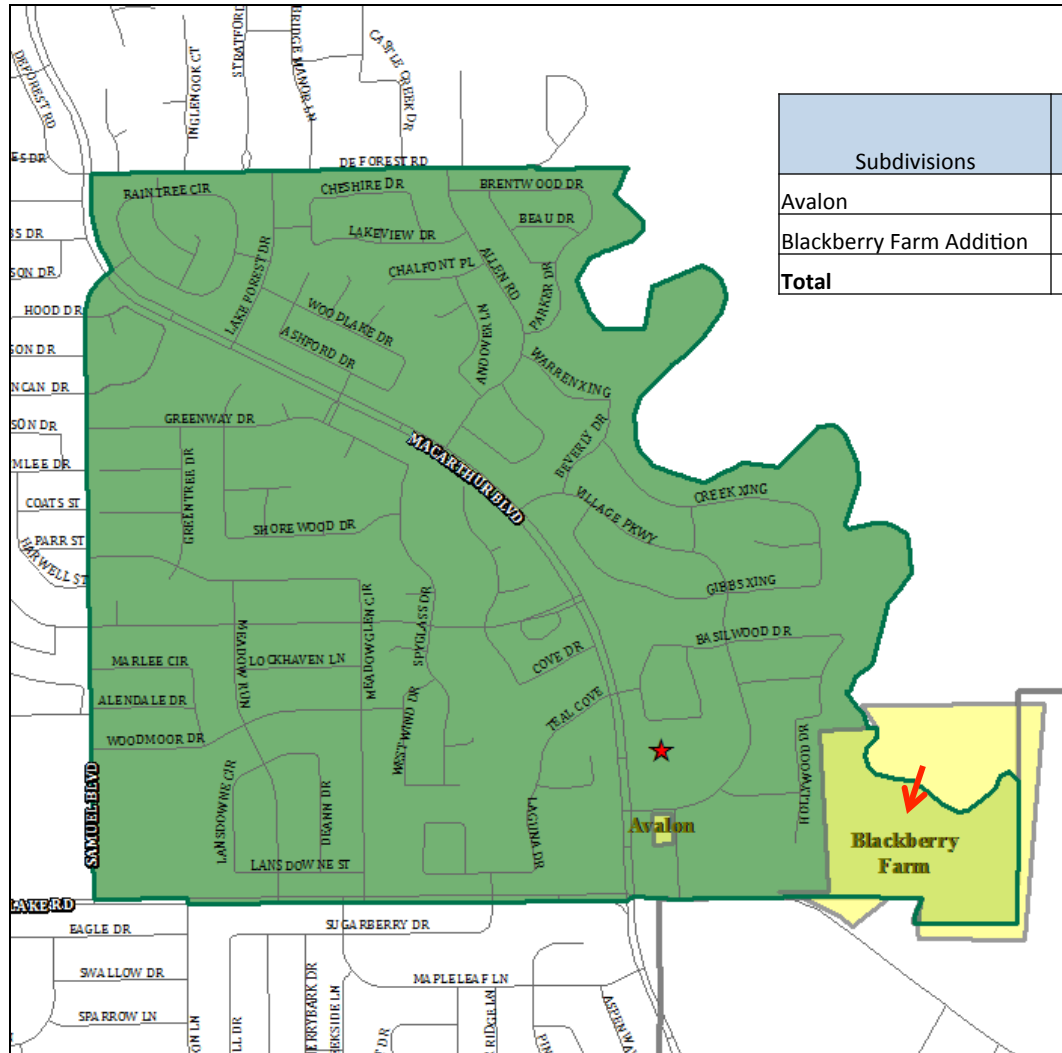
### Legend

- ★ Elementary Schools
- Active/Future Housing Developments
- Elementary Boundary
- ISD Boundary

Subdivisions	Current Homes	Est. New Homes					Total homes in 5 yrs	Total homes in 10 yrs
		2015	2016	2017	2018	2019		
Bellacere/Petterson	2	2	2	2	2	2	12	12
Irby Addition	0	0	0	0	0	9	9	19
Red Hawk Villas	29	10	10	10	0	0	59	59
<b>Total</b>	<b>31</b>	<b>12</b>	<b>12</b>	<b>12</b>	<b>2</b>	<b>11</b>	<b>80</b>	<b>90</b>

# LAKESIDE ELEMENTARY





Campus Name	Capacity	2014/15	2015/16	2016/17	2017/18	2018/19	2019/20	2020/21	2021/22	2022/23	2023/24	2024/25
Lakeside Elementary	600	503	506	506	493	480	472	484	501	518	534	549



Subdivisions	Current Homes	Est. New Homes					Total homes in 5 yrs	Total homes in 10 yrs
		2015	2016	2017	2018	2019		
Avalon	0	0	5	4	0	0	9	9
Blackberry Farm Addition	0	0	10	15	15	10	50	82
<b>Total</b>	<b>0</b>	<b>0</b>	<b>15</b>	<b>19</b>	<b>15</b>	<b>10</b>	<b>59</b>	<b>91</b>

The entirety of Blackberry Farms will be pre-zoned to Lakeside Elementary.

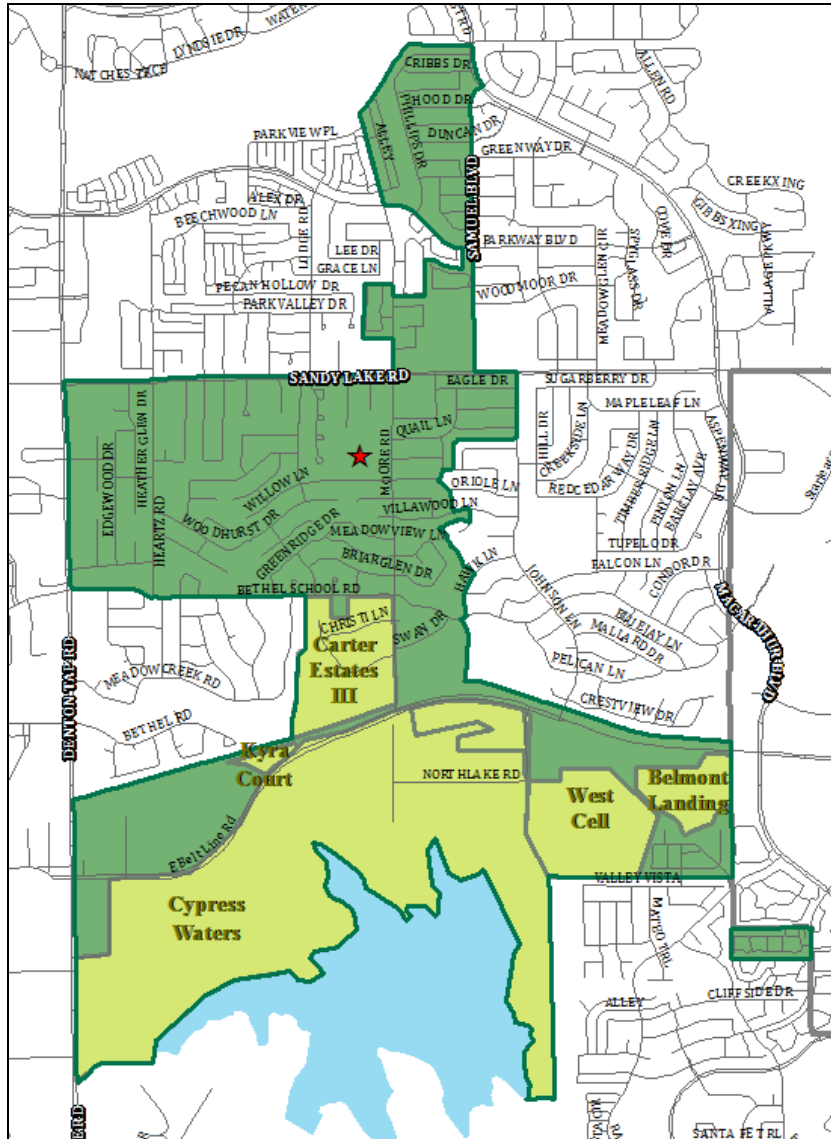
### Legend

-  Elementary Schools
-  Active/Future Housing Developments
-  Elementary Boundary
-  ISD Boundary



# AUSTIN ELEMENTARY

Campus Name	Capacity	2014/15	2015/16	2016/17	2017/18	2018/19	2019/20	2020/21	2021/22	2022/23	2023/24	2024/25
Austin Elementary	600	503	474	457	428	448	444	463	487	503	512	517



Year	EE	K	1st	2nd	3rd	4th	5th	Total	Growth	% Growth
2014/15	4	60	78	64	93	97	107	503	-80	-13.7%

As larger classes exit, they will make room for the new housing developments, keeping enrollment relatively flat.

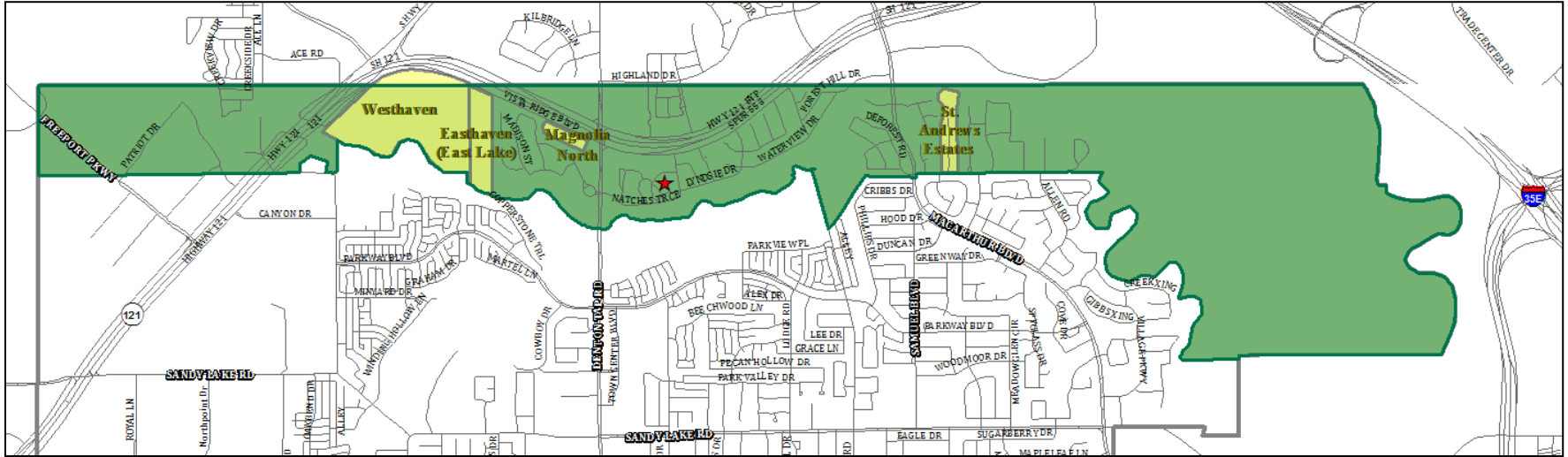
Subdivisions	Current Homes	Est. New Homes					Total homes in 5 yrs	Total homes in 10 yrs
		2015	2016	2017	2018	2019		
Belmont Landing	0	35	20	0	0	0	55	55
Carter Estates	39	1	0	0	0	0	40	40
Cypress Waters (Austin)	0	0	16	40	40	0	96	96
Kyra Court	0	0	0	11	11	0	22	22
West Cell Development	0	0	0	0	13	40	53	174
<b>Total</b>	<b>39</b>	<b>36</b>	<b>36</b>	<b>51</b>	<b>64</b>	<b>40</b>	<b>266</b>	<b>387</b>

## Legend

- ★ Elementary Schools
- Active/Future Housing Developments
- Elementary Boundary
- ISD Boundary

# DENTON CREEK ELEMENTARY

Campus Name	Capacity	2014/15	2015/16	2016/17	2017/18	2018/19	2019/20	2020/21	2021/22	2022/23	2023/24	2024/25
Denton Creek Elementary	600	593	610	643	669	714	774	814	863	909	950	990



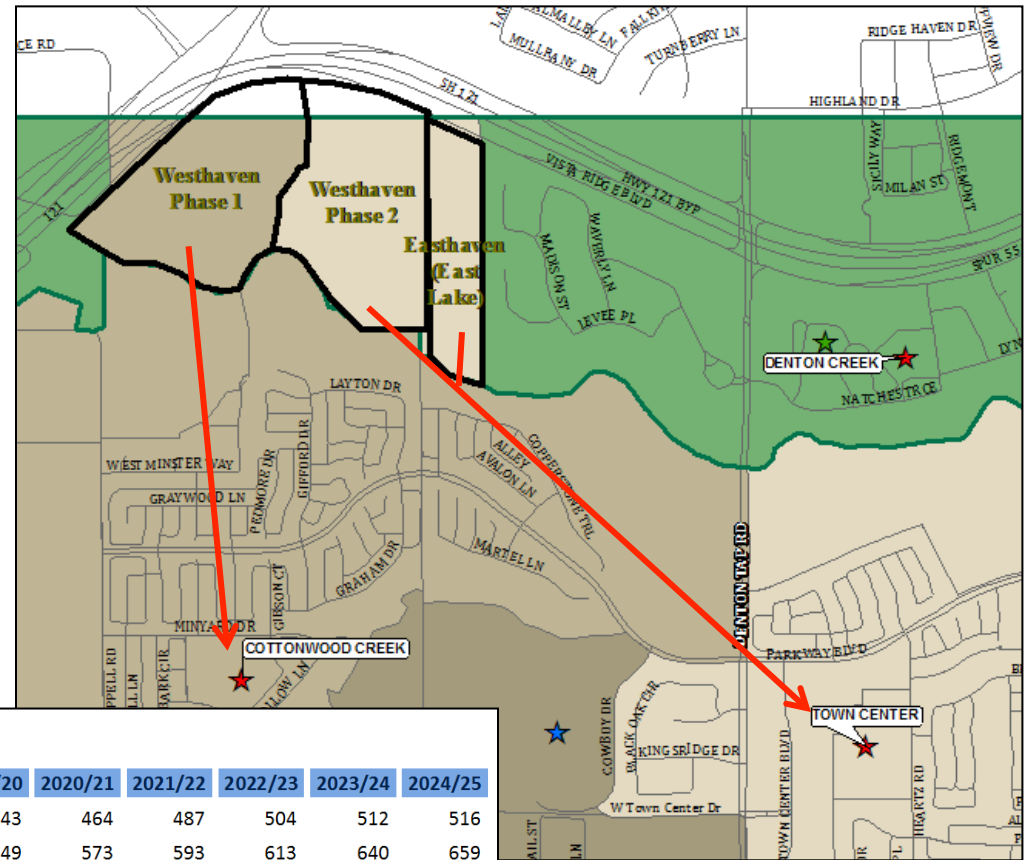
## Legend

- ★ Elementary Schools
- Active/Future Housing Developments
- Elementary Boundary
- ISD Boundary

Subdivisions	Current Homes	Est. New Homes					Total homes in 5 yrs	Total homes in 10 yrs
		2015	2016	2017	2018	2019		
East Lake (Easthaven)	0	25	33	0	0	0	58	58
Magnolia North Addition	0	0	10	10	4	0	24	24
St. Andrews Estates	18	1	1	1	0	0	21	21
Westhaven (Phase I)	0	0	0	20	40	40	100	125
Westhaven (Phase II)	0	40	40	40	20	0	140	140
<b>Total</b>	<b>18</b>	<b>66</b>	<b>84</b>	<b>71</b>	<b>64</b>	<b>40</b>	<b>343</b>	<b>368</b>

# ELEMENTARY PLAN 1

Divert major growth areas in Denton Creek to Cottonwood Creek and Town Center.



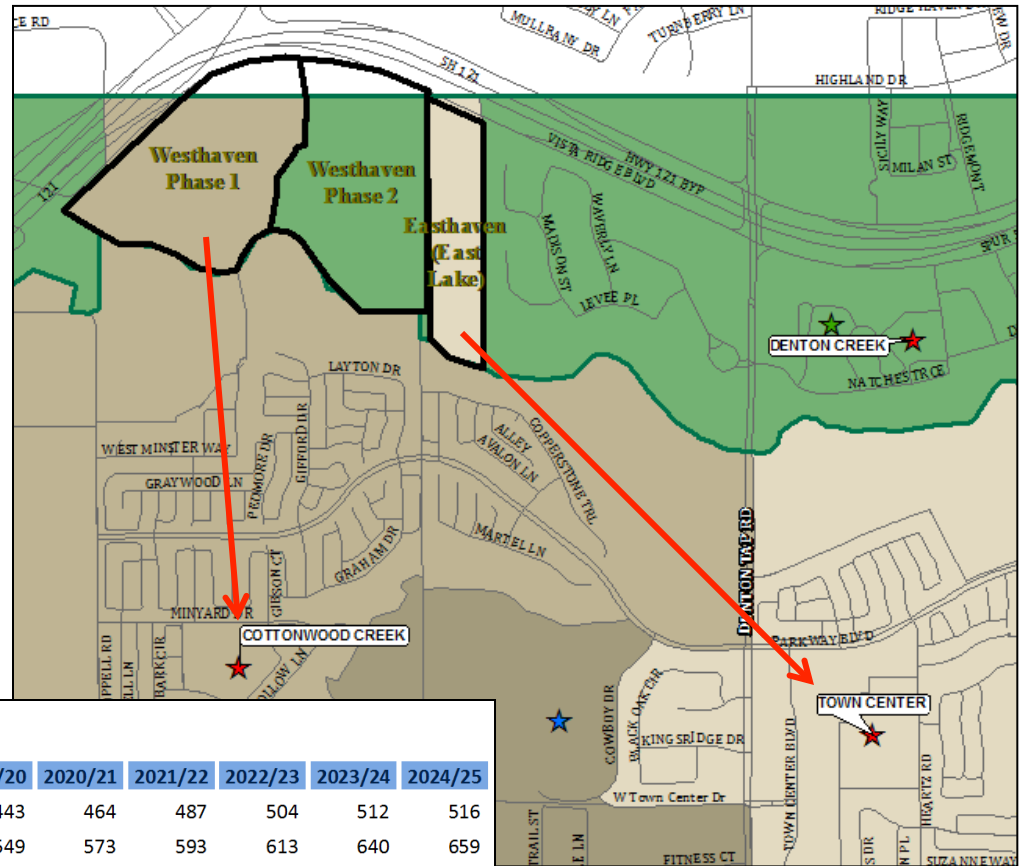
## Plan 1 Elementary Forecast Report (EE-5)

SCHOOL	2014/15	2015/16	2016/17	2017/18	2018/19	2019/20	2020/21	2021/22	2022/23	2023/24	2024/25
AUSTIN	503	473	458	425	448	443	464	487	504	512	516
COTTONWOOD CREEK	533	533	528	525	530	549	573	593	613	640	659
DENTON CREEK	593	587	592	594	612	651	672	708	741	776	807
LAKESIDE	503	504	508	494	479	472	484	501	521	533	550
LEE	533	600	675	707	769	856	904	939	986	1,035	1,073
MOCKINGBIRD	556	533	525	507	511	519	529	553	556	557	559
PINKERTON	321	339	344	359	379	407	414	423	441	453	468
TOWN CENTER	514	516	543	554	542	543	551	588	602	624	728
VALLEY RANCH	637	648	648	650	637	624	637	642	642	658	664
WILSON	550	558	562	566	593	590	602	628	631	624	627
<b>TOTAL</b>	<b>5,243</b>	<b>5,291</b>	<b>5,383</b>	<b>5,381</b>	<b>5,500</b>	<b>5,654</b>	<b>5,830</b>	<b>6,062</b>	<b>6,237</b>	<b>6,412</b>	<b>6,651</b>

Campus Name	Capacity	2014/15	2015/16	2016/17	2017/18	2018/19	2019/20	2020/21	2021/22	2022/23	2023/24	2024/25
Denton Creek Elementary	600	593	610	643	669	714	774	814	863	909	950	990

# ELEMENTARY PLAN 2

Divert major growth areas in Denton Creek to Cottonwood Creek and Town Center. Keep the immediate growth in Denton Creek.



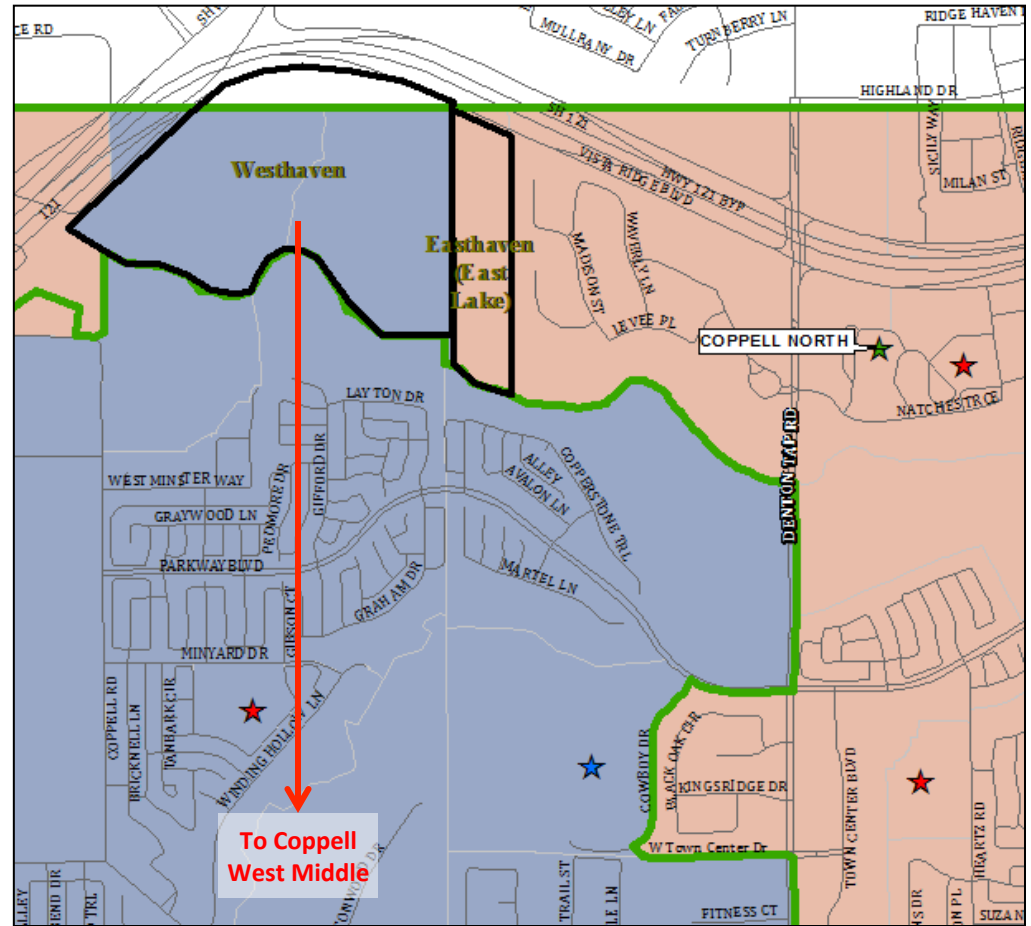
## Plan 2 Elementary Forecast Report (EE-5)

SCHOOL	2014/15	2015/16	2016/17	2017/18	2018/19	2019/20	2020/21	2021/22	2022/23	2023/24	2024/25
AUSTIN	503	473	458	425	448	443	464	487	504	512	516
COTTONWOOD CREEK	533	533	528	525	530	549	573	593	613	640	659
DENTON CREEK	593	602	622	638	666	708	731	770	806	844	878
LAKESIDE	503	504	508	494	479	472	484	501	521	533	550
LEE	533	600	675	707	769	856	904	939	986	1,035	1,073
MOCKINGBIRD	556	533	525	507	511	519	529	553	556	557	559
PINKERTON	321	339	344	359	379	407	414	423	441	453	468
TOWN CENTER	514	501	513	510	488	486	492	526	537	556	657
VALLEY RANCH	637	648	648	650	637	624	637	642	642	658	664
WILSON	550	558	562	566	593	590	602	628	631	624	627
<b>TOTAL</b>	<b>5,243</b>	<b>5,291</b>	<b>5,383</b>	<b>5,381</b>	<b>5,500</b>	<b>5,654</b>	<b>5,830</b>	<b>6,062</b>	<b>6,237</b>	<b>6,412</b>	<b>6,651</b>

Campus Name	Capacity	2014/15	2015/16	2016/17	2017/18	2018/19	2019/20	2020/21	2021/22	2022/23	2023/24	2024/25
Denton Creek Elementary	600	593	610	643	669	714	774	814	863	909	950	990

# MIDDLE SCHOOL PLAN

Relieve Coppel North Middle by diverting Westhaven to Coppel West Middle.

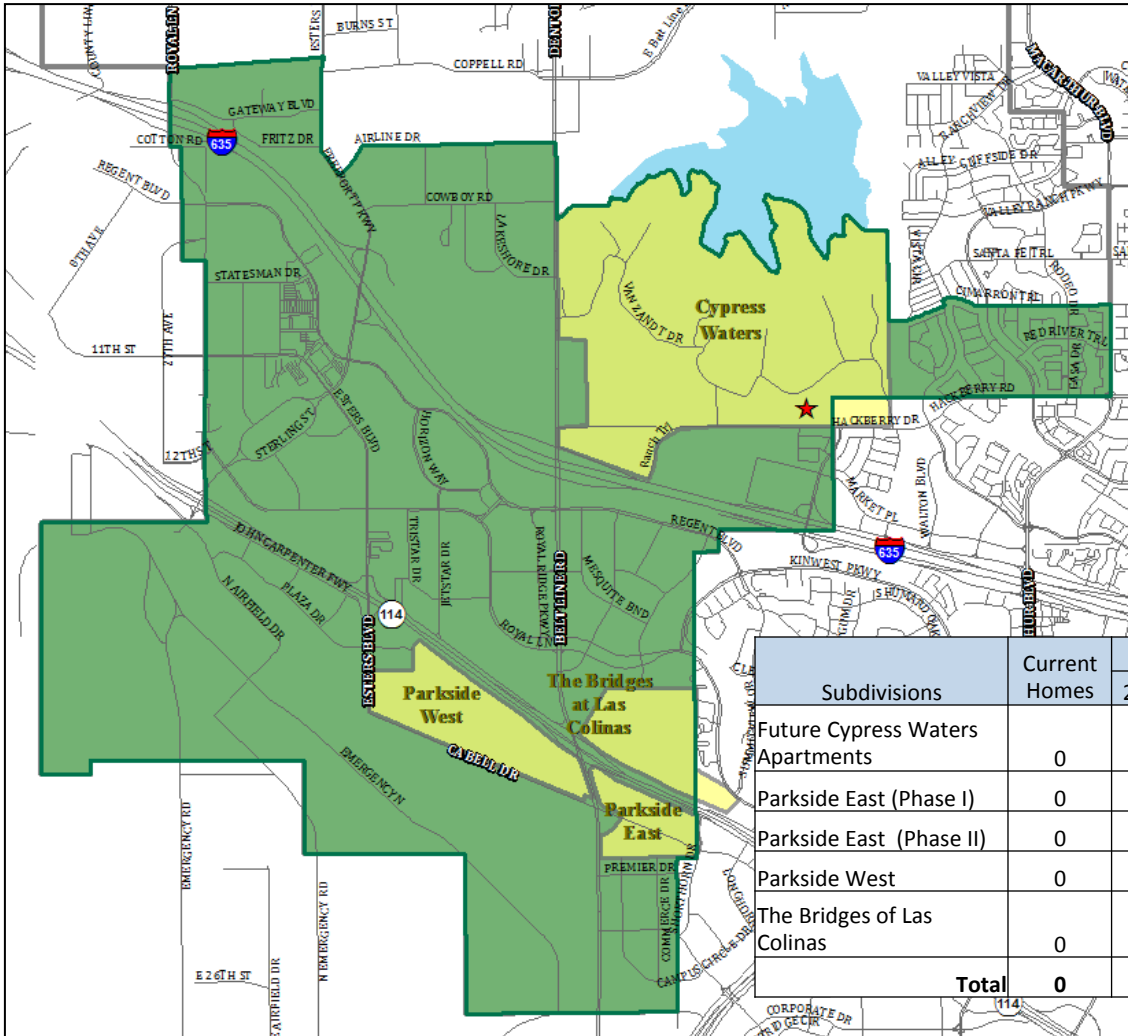


## Plan 1 Middle School / Junior High Forecast Report (6-8)

SCHOOL	2014/15	2015/16	2016/17	2017/18	2018/19	2019/20	2020/21	2021/22	2022/23	2023/24	2024/25
COPPELL EAST	904	981	985	971	932	933	879	854	834	850	887
COPPELL NORTH	906	959	967	981	973	975	957	938	936	944	1,009
COPPELL WEST	973	998	1,110	1,238	1,310	1,286	1,253	1,267	1,368	1,395	1,460
<b>TOTAL</b>	<b>2,783</b>	<b>2,938</b>	<b>3,062</b>	<b>3,190</b>	<b>3,215</b>	<b>3,194</b>	<b>3,089</b>	<b>3,059</b>	<b>3,138</b>	<b>3,189</b>	<b>3,356</b>

# LEE ELEMENTARY

Campus Name	Capacity	2014/15	2015/16	2016/17	2017/18	2018/19	2019/20	2020/21	2021/22	2022/23	2023/24	2024/25
Lee Elementary	740	533	603	674	708	771	857	903	938	985	1,035	1,074



## Legend

- ★ Elementary Schools
- Active/Future Housing Developments
- Elementary Boundary
- ISD Boundary

Further study is needed to develop a plan to address overcrowding at Lee Elementary.

Subdivisions	Current Homes	Estimated New Homes					Total homes in 5 yrs	Total homes in 10 yrs
		2015	2016	2017	2018	2019		
Future Cypress Waters Apartments	0	0	0	141	0	250	391	1141
Parkside East (Phase I)	0	25	25	25	25	25	125	125
Parkside East (Phase II)	0	25	25	25	25	25	125	125
Parkside West	0	0	0	25	50	50	125	375
The Bridges of Las Colinas	0	70	70	70	70	60	340	340
<b>Total</b>	<b>0</b>	<b>120</b>	<b>120</b>	<b>286</b>	<b>170</b>	<b>410</b>	<b>1106</b>	<b>2106</b>