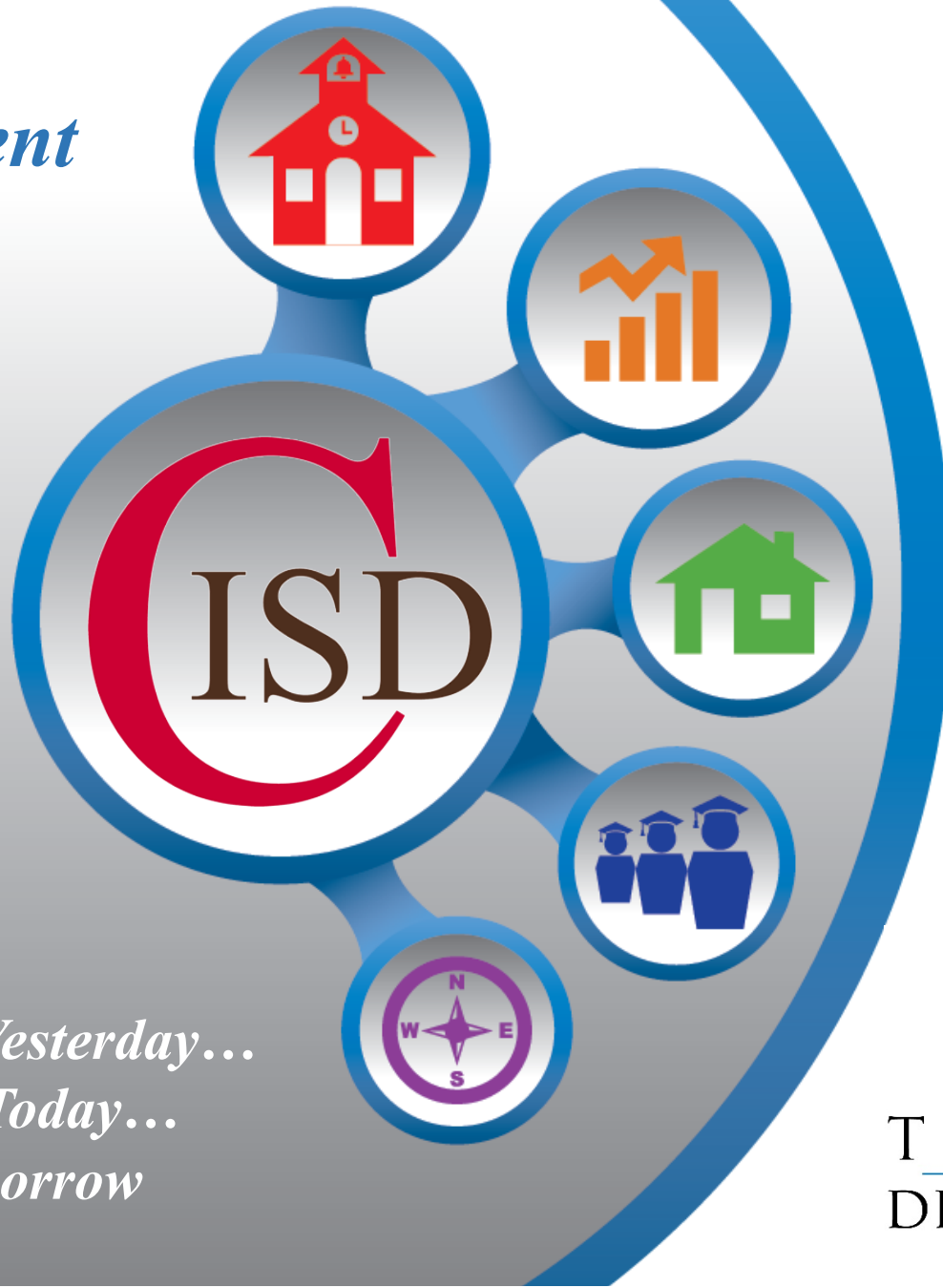


*Coppell
Independent
School
District*



Quarterly
Report
4Q14

*Learn from Yesterday...
Understand Today...
Plan for Tomorrow*



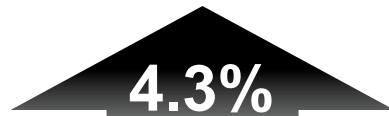
TEMPLETON
DEMOGRAPHICS

Economic Conditions – DFW MSA

DFW MSA
Unemployment Rate



- U.S. 5.4%
- Texas 4.1%
- DFW MSA 4.0%
- Dallas County 4.4%
- Coppell 3.7%



Job Growth
DFW MSA

- 136,900 new jobs created in 2014



Annual SF Permits
DFW MSA

- 1,812 more than 2013





DFW New Home Ranking Report

ISD Ranked by Annual Closings – 4Q14

Rank	District Name	Annual Starts	Annual Closings	VDL	Future
1	Frisco ISD	2,743	2,669	4,064	7,319
2	Denton ISD	1,830	1,666	2,384	15,088
3	Northwest ISD	1,223	1,229	1,507	22,180
4	Prosper ISD	1,335	1,133	2,138	19,503
5	Keller ISD	1,022	1,000	1,293	3,094
6	Dallas ISD	928	914	1,956	5,824
7	Lewisville ISD	919	873	2,248	3,705
8	Eagle Mtn. - Saginaw ISD	832	825	1,661	19,645
9	Allen ISD	656	623	766	1,411
10	Rockwall ISD	726	619	1,649	7,701
11	McKinney ISD	601	561	1,202	6,837
12	Mansfield ISD	543	546	1,043	5,443
13	Forney ISD	565	542	922	11,397
14	Little Elm ISD	624	539	1,306	5,109
15	Crowley ISD	494	425	1,476	8,483
16	Burleson ISD	404	416	734	3,793
17	Plano ISD	416	383	1,132	1,306
18	HEB ISD	436	371	375	5,361
19	Wylie ISD	459	368	552	4,755
20	Midlothian ISD	446	365	919	20,294

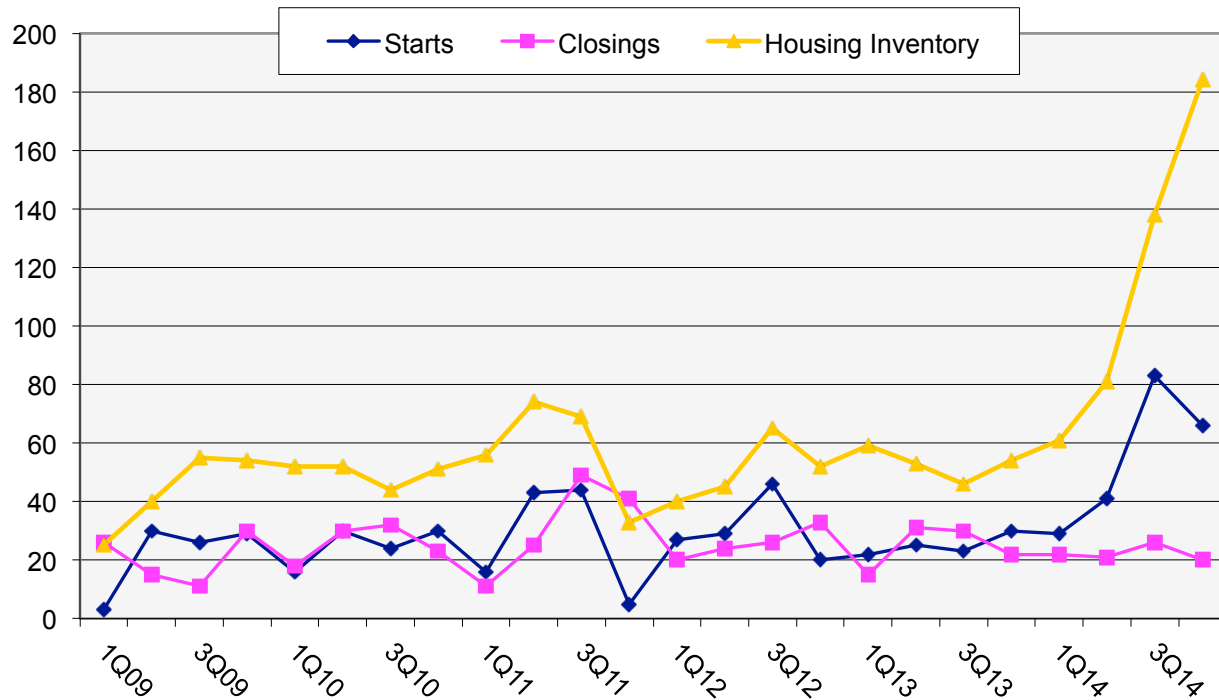


45	Kennedale ISD	160	92	260	181
46	Coppell ISD	219	89	372	1,410
47	Grapevine-Colleyville ISD	133	87	448	336





New Housing Activity 4Q14



Starts	2009	2010	2011	2012	2013	2014
1Q	3	16	16	27	22	29
2Q	30	30	43	29	25	41
3Q	26	24	44	46	23	83
4Q	29	30	5	20	30	66
Total	88	100	108	122	100	219

Closings	2009	2010	2011	2012	2013	2014
1Q	26	18	11	20	15	22
2Q	15	30	25	24	31	21
3Q	11	32	49	26	30	26
4Q	30	23	41	33	22	20
Total	82	103	126	103	98	89

- 4Q14 starts are above 60, the second highest total in the last 5 years
- The district started 219 homes in 2014, the highest total in the last 5 years
- Inventory appears to be growing as homes may be taking longer to complete based on price point and labor force

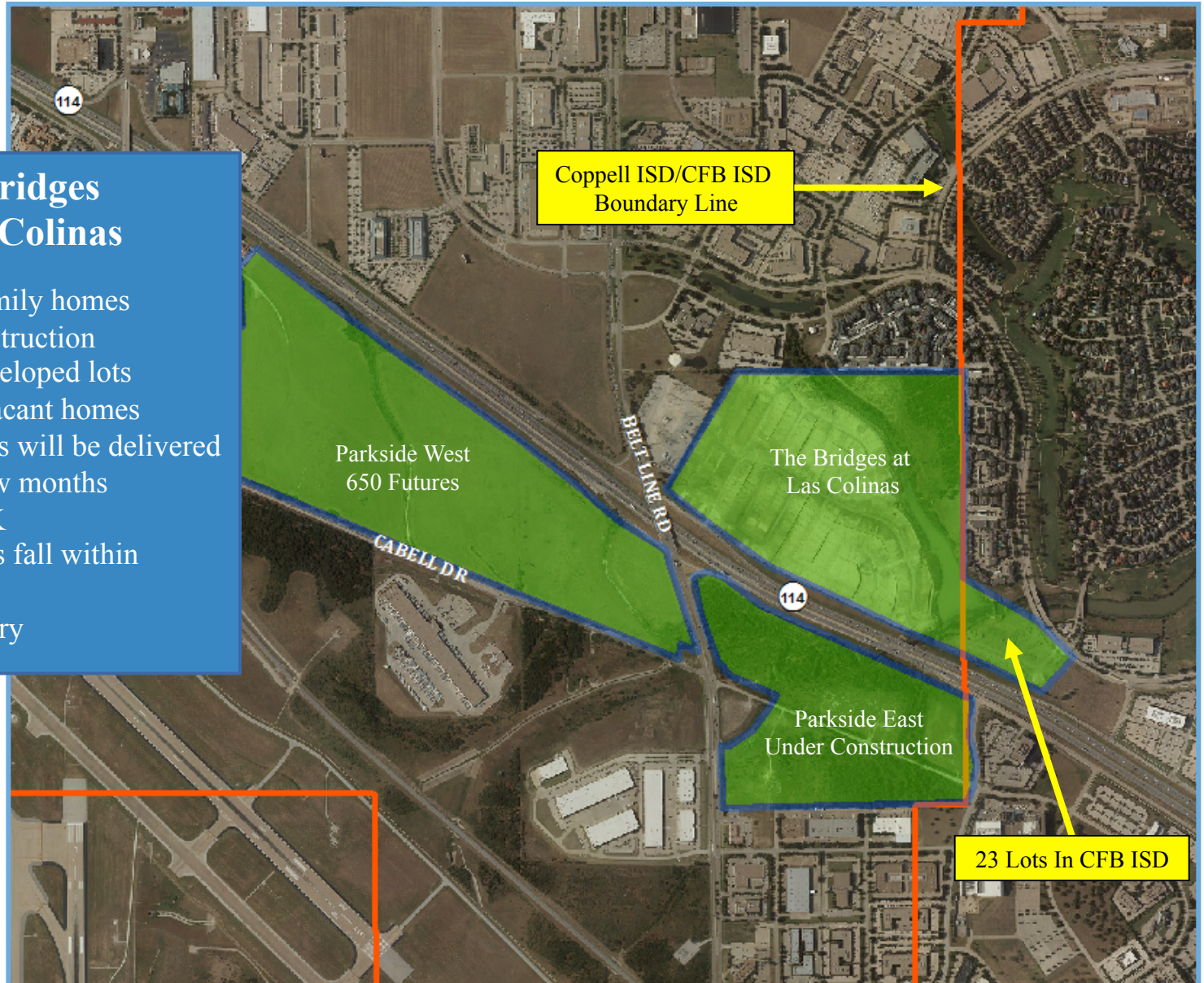




New Housing Activity

The Bridges at Las Colinas

- 415 single family homes
- 76 under construction
- 33 vacant developed lots
- 30 finished vacant homes
- 2 new sections will be delivered in the next few months
- \$460K-\$623K
- All but 23 lots fall within Coppell ISD
- Lee Elementary





New Housing Activity

Parkside West

- Future development
- 650 total single-family homes
- City of Irving
- Lee Elementary

Parkside West
650 Futures

Coppell ISD/CFB ISD
Boundary Line

The Bridges at
Las Colinas

Parkside East

- 250 total single-family homes
 - City of Irving
- 6 homes under construction
- 69 vacant developed lots
 - \$431K-\$581K
 - Lee Elementary

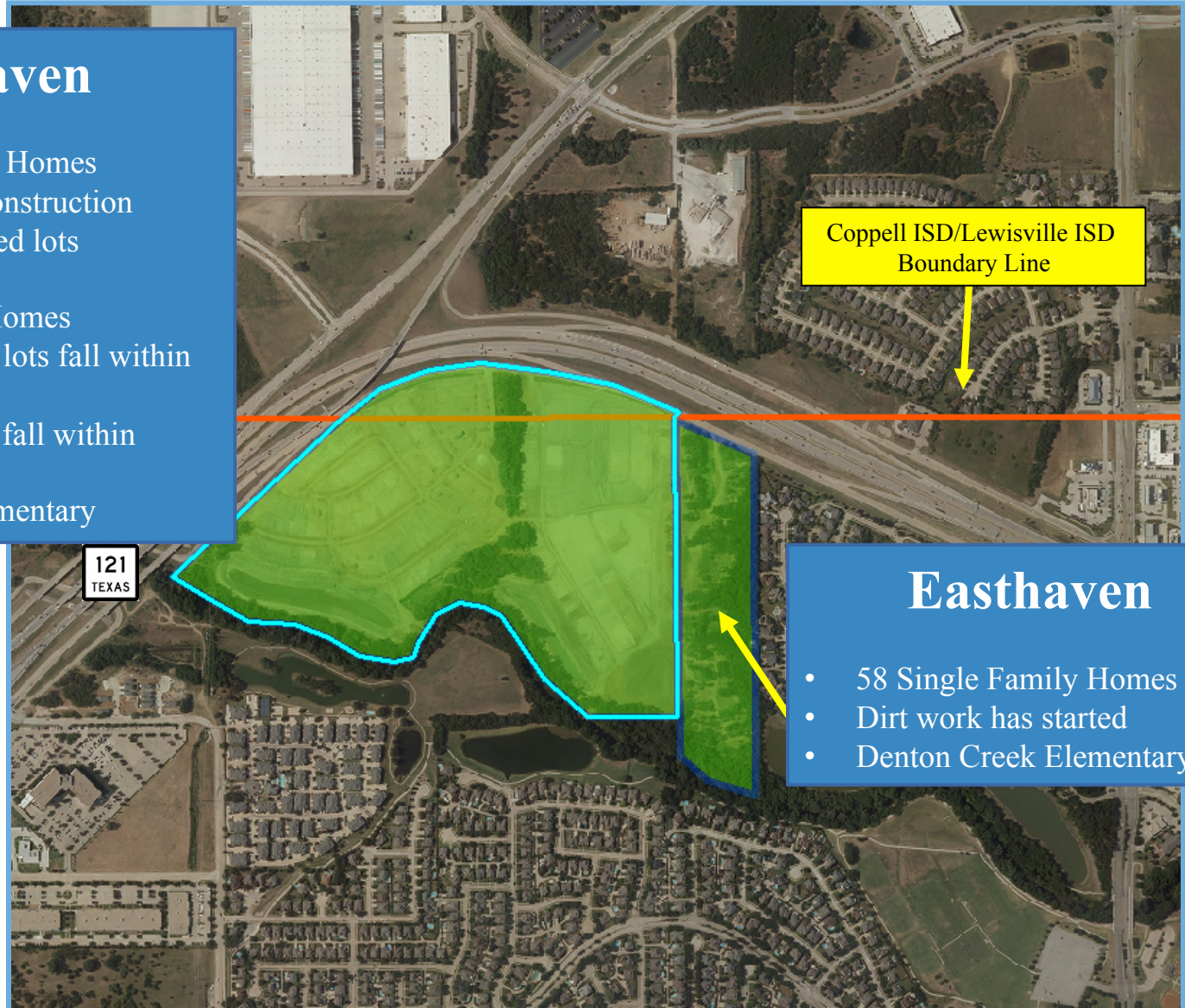
Parkside East



New Housing Activity

Westhaven

- 297 Single Family Homes
- 34 homes under construction
- 96 vacant developed lots
- \$408K-\$590K
- Standard Pacific Homes
- Approximately 17 lots fall within Lewisville ISD
- All remaining lots fall within Coppell ISD
- Denton Creek Elementary



Coppell ISD/Lewisville ISD
Boundary Line

Easthaven

- 58 Single Family Homes
- Dirt work has started
- Denton Creek Elementary



New Housing Activity

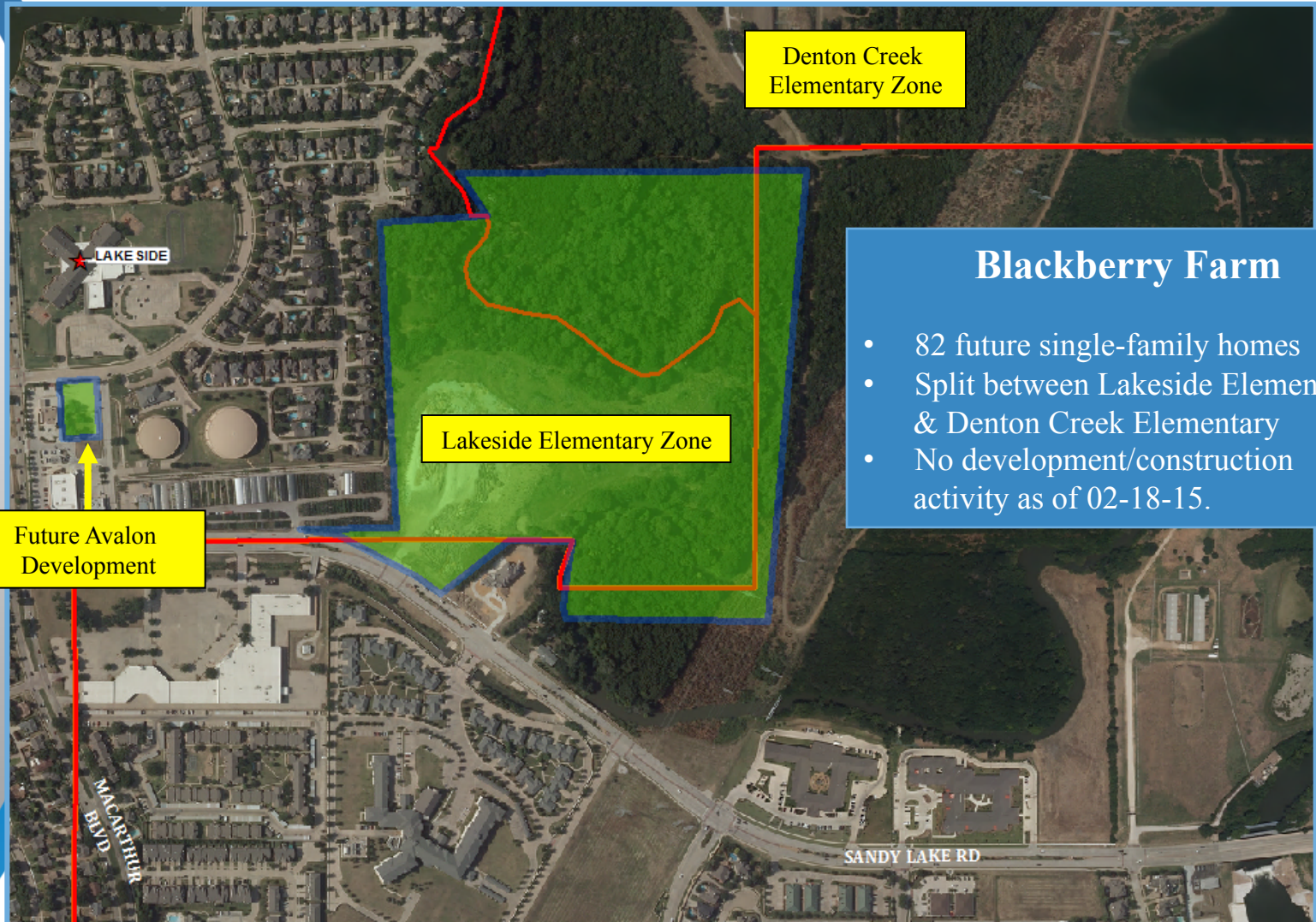
Belmont Landing

- 55 total lots
- 15 under construction
- 37 vacant developed lots
- David Weekley Homes
- Homes in the \$400's
- Austin Elementary





New Housing Activity



Denton Creek Elementary Zone

Lakeside Elementary Zone

Future Avalon Development

Blackberry Farm

- 82 future single-family homes
- Split between Lakeside Elementary & Denton Creek Elementary
- No development/construction activity as of 02-18-15.





New Housing Activity

Cypress Waters

- Developer estimates 10,000 housing units at full build-out
- 673 apartment units have been constructed to date
- Developer anticipates building 141 units in 2015-2016 (not approved as of February 2015)
- Developer projects adding 500-600 additional units in 2017-2018
- Full build out is estimated to take 20-30 years





Additional New Housing Activity

Subdivision Name	Total Lots/ Units	Total Lots/Units Remaining	Attendance Zone
Avalon	9	9	Lakeside
Avenue @ Denton Tap	29	29	Pinkerton
Bellacere	8	6	Wilson
Carter Estates III	24	1	Austin
Kyra Court	22	22	Austin
Old Town (Main St) Phase II	64	34	Pinkerton
Petterson	7	7	Wilson
RL Hammond	18	18	Pinkerton
Red Hawk	54	30	Wilson
St. Andrews Estates	23	3	Denton Creek
Villas of Southwestern	7	6	Pinkerton
Totals	265	165	



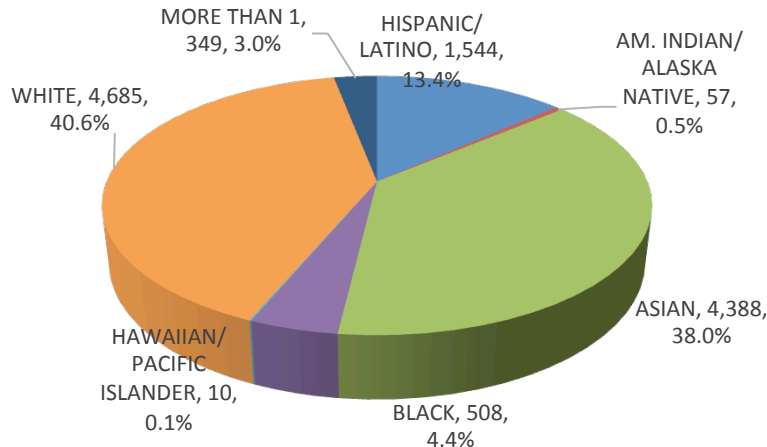
Enrollment History

Year (Oct.)	EE	Pre-K	K	1st	2nd	3rd	4th	5th	6th	7th	8th	9th	10th	11th	12th	Total	Total Growth	Total Percent
2010/11	46	125	664	730	726	705	745	825	844	802	823	866	813	793	710	10,217		
2011/12	53	130	761	751	776	795	751	798	881	870	852	870	834	797	757	10,676	459	4.5%
2012/13	55	120	695	801	809	807	861	823	863	898	897	918	841	838	773	10,999	323	3.0%
2013/14	49	139	742	784	861	843	873	901	896	874	901	924	894	869	814	11,364	365	3.3%
2014/15	36	125	736	788	826	899	908	925	957	930	896	926	891	876	822	11,541	177	1.6%

*Yellow box = largest grade per year
*Green box = second largest grade per year

Race and Ethnicity Totals

Year (Oct.)	Total	Black or African American	%	Hispanic	%	American Indian or Alaska Native	%	Asian	%	White	%	Two or more races	%	Native Hawaiian/ Other Pacific Islander	%
2010/11	10,217	519	5.1%	1,388	13.6%	31	0.3%	2,607	25.5%	5,413	53.0%	247	2.4%	12	0.1%
2011/12	10,676	520	4.9%	1,429	13.4%	27	0.3%	3,110	29.1%	5,285	49.5%	292	2.7%	13	0.1%
2012/13	10,999	528	4.8%	1,446	13.1%	48	0.4%	3,548	32.3%	5,118	46.5%	301	2.7%	10	0.1%
2013/14	11,364	523	4.6%	1,462	12.9%	59	0.5%	3,991	35.1%	4,996	44.0%	321	2.8%	12	0.1%
2014/15	11,541	508	4.4%	1,544	13.4%	57	0.5%	4,388	38.0%	4,685	40.6%	349	3.0%	10	0.1%



Economically Disadvantaged Totals

Year (Oct.)	Economically Disadvantaged	% ED
2010/11	1,085	10.6%
2011/12	1,099	10.3%
2012/13	1,128	10.3%
2013/14	1,154	10.2%
2014/15	1,167	10.1%





Ten Year Forecast

By Grade Level

Year (Oct.)	EE	Pre-K	K	1st	2nd	3rd	4th	5th	6th	7th	8th	9th	10th	11th	12th	Total	Total Growth	Total Percent
2010/11	46	125	664	730	726	705	745	825	844	802	823	866	813	793	710	10,217		
2011/12	53	130	761	751	776	795	751	798	881	870	852	870	834	797	757	10,676	459	4.5%
2012/13	55	120	695	801	809	807	861	823	863	898	897	918	841	838	773	10,999	323	3.0%
2013/14	49	139	742	784	861	843	873	901	896	874	901	924	894	869	814	11,364	365	3.3%
2014/15	36	125	736	788	826	899	908	925	957	930	896	926	891	876	822	11,541	177	1.6%
2015/16	36	125	744	796	840	860	950	948	998	981	955	963	908	890	855	11,849	308	2.7%
2016/17	36	125	777	799	857	876	913	997	1,024	1,030	1,012	1,011	940	904	864	12,165	316	2.7%
2017/18	36	125	792	840	840	883	919	949	1,070	1,063	1,062	1,070	992	932	871	12,444	279	2.3%
2018/19	36	125	829	852	894	866	940	963	1,008	1,106	1,102	1,124	1,045	987	907	12,784	340	2.7%
2019/20	36	125	868	898	908	929	914	979	1,013	1,036	1,142	1,155	1,100	1,046	963	13,112	328	2.6%
2020/21	36	125	902	940	957	935	986	952	1,013	1,025	1,063	1,208	1,131	1,096	1,015	13,384	272	2.1%
2021/22	36	125	917	972	1,001	999	996	1,025	995	1,032	1,046	1,126	1,182	1,129	1,067	13,648	264	2.0%
2022/23	36	125	930	993	1,031	1,034	1,062	1,037	1,076	1,013	1,057	1,110	1,102	1,180	1,099	13,885	237	1.7%
2023/24	36	125	945	1,005	1,052	1,069	1,100	1,103	1,085	1,091	1,035	1,123	1,086	1,099	1,148	14,102	217	1.6%
2024/25	36	125	956	1,021	1,066	1,184	1,140	1,147	1,148	1,103	1,114	1,101	1,099	1,083	1,069	14,392	290	2.1%

*Yellow box = largest grade per year
 *Green box = second largest grade per year

- CISD will likely exceed 13,000 students by 2019/20
- 5 year growth = 1,571 students
- 10 year growth = 2,851 students
- 2024/25 enrollment = 14,392





Ten Year Forecast

By Elementary Campus

Campus Name	Current	ENROLLMENT PROJECTIONS									
	2014/15	2015/16	2016/17	2017/18	2018/19	2019/20	2020/21	2021/22	2022/23	2023/24	2024/25
Austin Elementary	503	474	457	428	448	444	463	487	503	512	517
Cottonwood Creek Elementary	533	534	527	517	507	508	521	537	555	577	594
Denton Creek Elementary	593	610	643	669	714	774	814	863	909	950	990
Lakeside Elementary	503	506	506	493	480	472	484	501	518	534	549
Lee Elementary	533	603	674	708	771	857	903	938	985	1,035	1,074
Mockingbird Elementary	556	533	527	508	510	517	531	549	557	559	563
Pinkerton Elementary	321	342	346	358	379	406	415	425	441	455	469
Town Center Elementary	514	491	490	488	465	462	466	498	505	529	627
Valley Ranch Elementary	637	647	647	648	637	626	634	645	645	659	665
Wilson Elementary	550	559	563	567	594	591	602	628	630	625	627
ELEMENTARY TOTALS	5,243	5,299	5,380	5,384	5,505	5,657	5,833	6,071	6,248	6,435	6,675
Elementary Absolute Change	51	56	81	4	121	152	176	238	177	187	240
Elementary Percent Change	0.98%	1.07%	1.53%	0.07%	2.25%	2.76%	3.11%	4.08%	2.92%	2.99%	3.73%

- Denton Creek Elementary may reach 700 students by 2018
- Lee Elementary may reach 700 students by 2017, this is a 32.8% rise from current enrollment
- Lee Elementary growth is due to new housing developments in the Bridges at Los Colinas, Parkside East and Parkside West
- Total elementary enrollment is expected to rise by 1.07% next fall





Ten Year Forecast

By Middle School & High School Campus

	Current	ENROLLMENT PROJECTIONS									
Campus Name	2014/15	2015/16	2016/17	2017/18	2018/19	2019/20	2020/21	2021/22	2022/23	2023/24	2024/25
Coppell Middle School East	904	983	986	976	927	924	881	860	836	852	885
Coppell Middle School North	906	969	990	1,016	1,029	1,041	1,033	1,008	1,005	1,025	1,091
Coppell Middle School West	973	982	1,090	1,203	1,260	1,226	1,187	1,205	1,305	1,334	1,389
MIDDLE SCHOOL TOTALS	2,783	2,934	3,066	3,195	3,216	3,191	3,101	3,073	3,146	3,211	3,365
Middle School Absolute Change	112	151	132	129	21	-25	-90	-28	73	65	154
Middle School Percent Change	4.19%	5.43%	4.50%	4.21%	0.66%	-0.78%	-2.82%	-0.90%	2.38%	2.07%	4.80%
Coppell High School	3,136	3,236	3,330	3,464	3,628	3,829	4,006	4,046	4,034	3,992	3,893
New Tech High School	379	380	389	401	435	435	444	458	457	464	459
HIGH SCHOOL TOTALS	3,515	3,616	3,719	3,865	4,063	4,264	4,450	4,504	4,491	4,456	4,352
High School Absolute Change	14	101	103	146	198	201	186	54	-13	-35	-104
High School Percent Change	0.40%	2.87%	2.85%	3.92%	5.13%	4.94%	4.36%	1.22%	-0.29%	-0.78%	-2.34%
DISTRICT TOTALS	11,541	11,849	12,165	12,444	12,784	13,112	13,384	13,648	13,885	14,102	14,392
District Absolute Change	177	308	316	279	340	328	272	264	237	217	290
District Percent Change	1.56%	2.67%	2.67%	2.29%	2.73%	2.56%	2.08%	1.97%	1.73%	1.56%	2.05%

- Coppell Middle School West may reach 1,000 students by the fall of 2016
- Total middle school enrollment is expected to grow by more than 4% each year for the next three years
- Coppell High School may have more than 3,300 students by 2016
- Total high school enrollment is expected to grow by more than 2% each year for the next 6 years





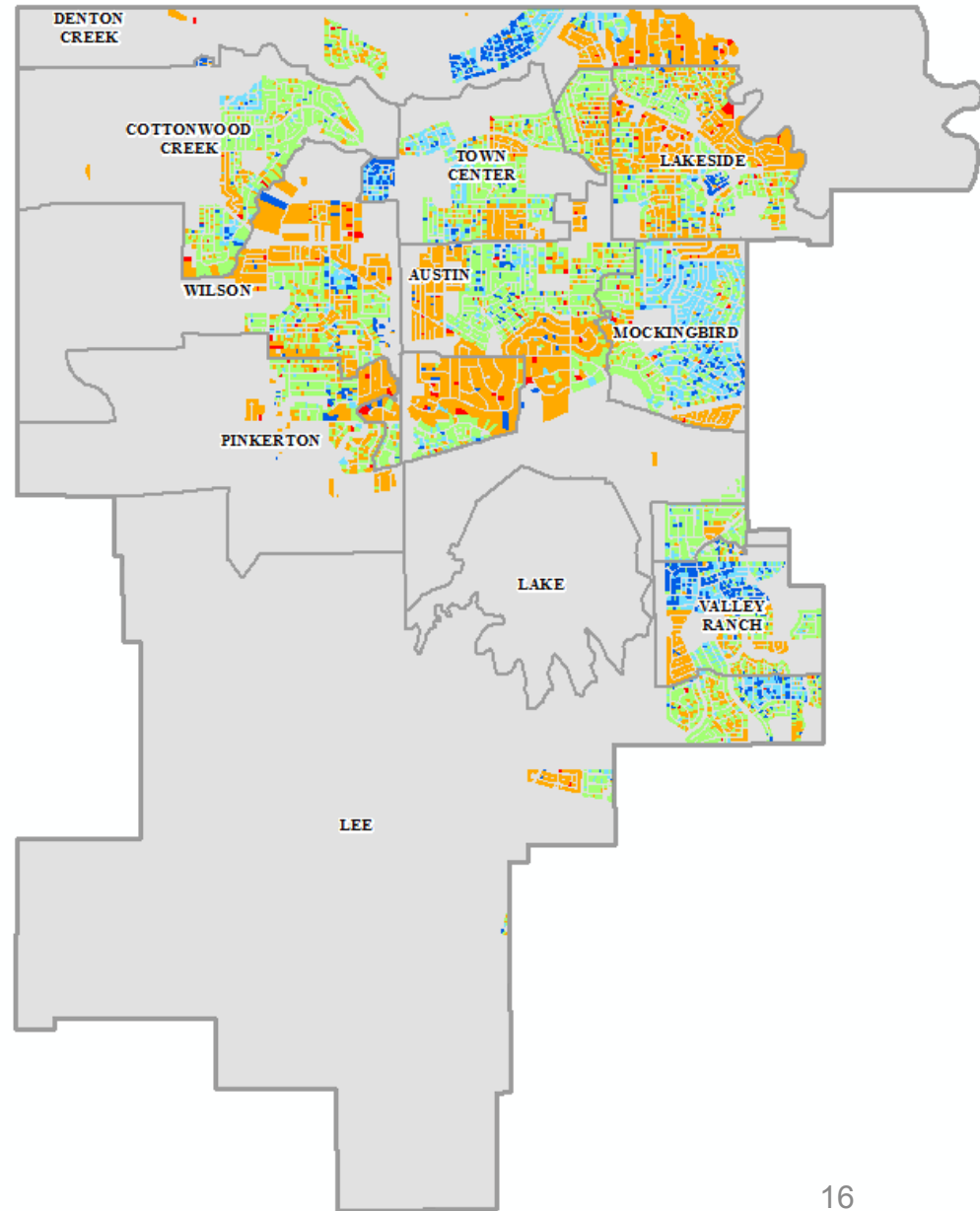
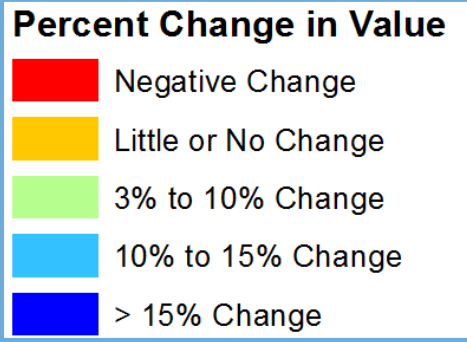
County Appraisal Values

Percent Change in Value 2013 – 2014

\$8.6 Billion

10%

Net Taxable Value

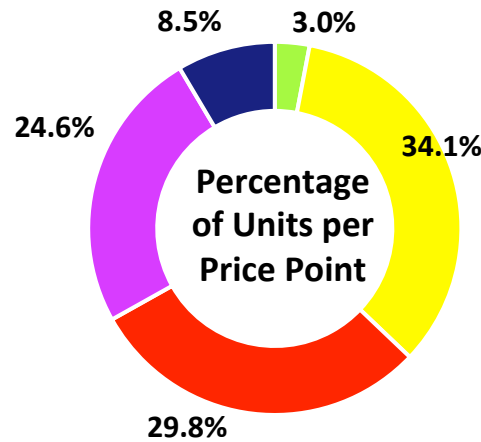
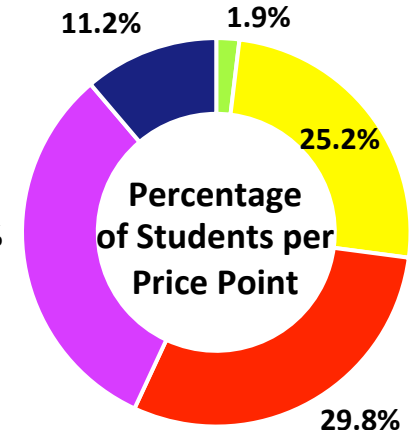
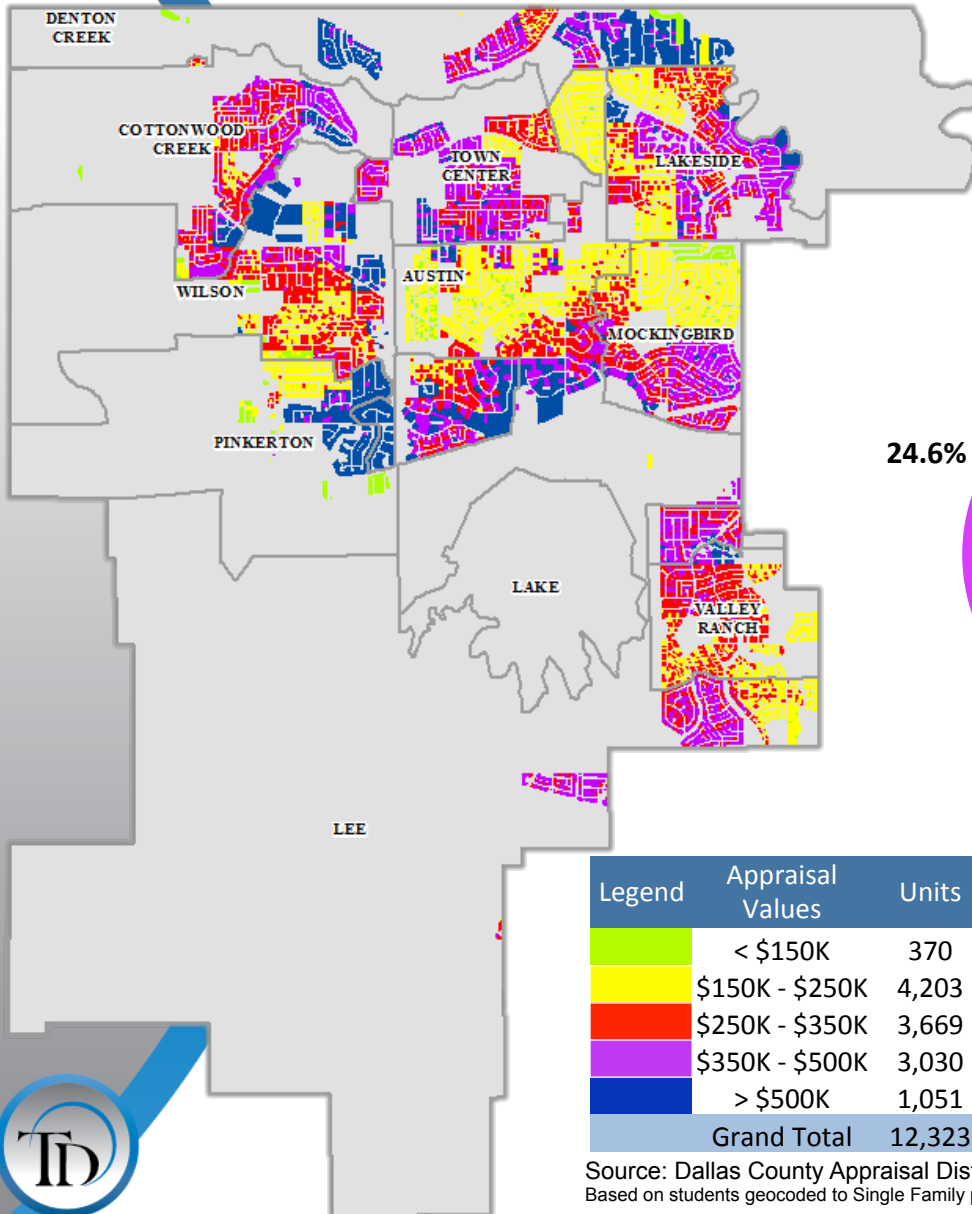


Source: Dallas County Appraisal Districts



2014 County Appraisal Values

Appraisal Values Map and Average Student Yield by Price Point



Legend	Appraisal Values	Units	Total Students	Total Yield	Elem. Students	Elem. Yield	MS Students	MS Yield	HS Students	HS Yield
	< \$150K	370	162	0.438	85	0.230	33	0.089	44	0.119
	\$150K - \$250K	4,203	2,133	0.507	937	0.223	509	0.121	687	0.163
	\$250K - \$350K	3,669	2,527	0.689	1,122	0.306	606	0.165	799	0.218
	\$350K - \$500K	3,030	2,701	0.891	1,086	0.358	701	0.231	914	0.302
	> \$500K	1,051	949	0.903	363	0.345	224	0.213	362	0.344
	Grand Total	12,323	8,472	0.687	3,593	0.292	2,073	0.168	2,806	0.228

Source: Dallas County Appraisal District & Templeton Demographics.
Based on students geocoded to Single Family parcels with verified addresses





Summary

- Texas economy continues to be the strongest state economy in the country.
- DFW will continue to be a leader in job and population growth due to the energy boom and its diverse economy.
- 219 housing starts in 2014 were the highest in the last 5 years.
- CISD can expect an increase of approximately 1,500 students during the next 5 years.
- CISD is projected to have over 14,000 students in 10 years.